

AAMCS-UDC-0.5G-26.5G-xxdB-Sf

AA MCS

500MHz-26.5 GHz

10-20dB Directional coupler

FEATURES

- Ultra broadband Unit
- Unidirectional Coupler
- Minimal RF Insertion Loss
- High Reliability



P A S S I V E C O M P O N E N T S

DESCRIPTION

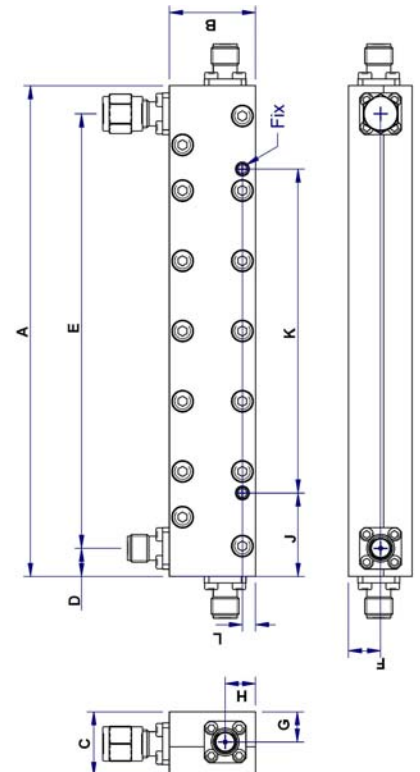
The Directional and Hybrid couplers offered by AA MCS are designed for both commercial and military applications on range DC-50GHz. Models are available in connectorized SMA, BNC, N, TNC (option) packages, depending on the frequency. All units are designed and manufactured to ensure statistical control of important parameters such as insertion loss and input/output return loss, with power up to more than 1 kWatt.

Electrical Specifications

Bandwidth	0.5-26.5GHz	
Nominal coupling		
AAMCS-UDC-0.5G-26.5G-10dB-Sf	Max	10 ± 1.2dB
AAMCS-UDC-0.5G-26.5G-20dB-Sf		20 ± 1.2dB
Coupling Flatness	Max	0.5-6G +1.5 /-1dB 6-26.5G ± 2dB
Main Line Insertion Loss *		
AAMCS-UDC-0.5G-26.5G-10dB-Sf	Max	1.80dB
AAMCS-UDC-0.5G-26.5G-20dB-Sf		1.50dB
VSWR	Max	0.5-6G 1.20:1 6-18G 1.45:1 18-26.5G 1.50:1
Directivity		
AAMCS-UDC-0.5G-26.5G-10dB-Sf	Min	0.5-6G 20dB
		6-18G 15dB
		18-26.5G 10dB **
AAMCS-UDC-0.5G-26.5G-20dB-Sf	Min	0.5-6G 20dB
		6-18G 13dB
		18-26.5G 10dB **
Power CW	Min	30 W
Connector	SMA f	
Operating Temperature	°C	-40 to +85°C
Storage Temperature	°C	-55 to +125°C
Waterproof ness	IP50	

* including coupling loss

** 12dB typical



Outline is subject to change without prior notice

A	B	C	D	E	F
111.8	19.6	14.45	6.4	99	7.2
G	H	J	K	L	Fix
7.25	6.9	/	/	/	M2.5

Size in mm



AA MCS

MICROWAVE COMPONENTS AND SYSTEMS

AA Sa 18, rue Nicolas Appert F-91898 ORSAY - FRANCE

Tel : +33 (0)1 76 91 50 12 – Fax : +33 (0)1 76 91 50 31 – www.aa-mcs.com

07/11