

AAMCS-UDC-1G-3.5G-xxdB-Sf

AA MCS

1-3.5 GHz

6-10-20dB Directional coupler

FEATURES

- **Broadband Unit**
- **Unidirectional Coupler**
- **Minimal RF Insertion Loss**
- **High Reliability**
- **N Female Connectors available**



DESCRIPTION

The Directional and Hybrid couplers offered by AA MCS are designed for both commercial and military applications on range DC-50GHz. Models are available in connectorized SMA, BNC, N, TNC (option) packages, depending on the frequency. All units are designed and manufactured to ensure statistical control of important parameters such as insertion loss and input/output return loss, with power up to more than 1 kWatt..

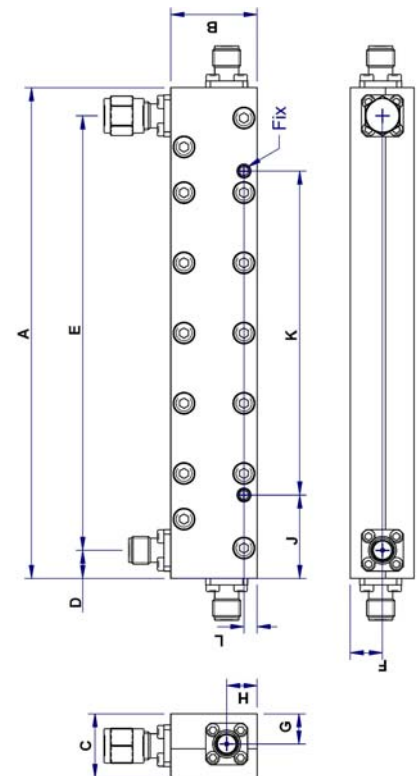
Electrical Specifications

Bandwidth		1-3.5 GHz
Nominal coupling		
AAMCS-UDC-1G-3.5G-6dB-Sf	Max	6 ± 1 dB
AAMCS-UDC-1G-3.5G -10dB-Sf		10 ± 1 dB
AAMCS-UDC-1G-3.5G -20dB-Sf		20 ± 1 dB
Coupling Flatness	Max	± 0.5 dB ***
Main Line Insertion Loss *		
AAMCS-UDC-1G-3.5G-6dB-Sf	Max	1.80 dB
AAMCS-UDC-1G-3.5G -10dB-Sf		0.70 dB
AAMCS-UDC-1G-3.5G -20dB-Sf		0.35 dB
VSWR	Max	1.2:1
Directivity	Min	22 dB **
Power CW	Min	30 W
Connector		SMA f
Operating Temperature	°C	-40 to +85°C
Storage Temperature	°C	-55 to +125°C
Waterproof ness		IP50

* including coupling loss

** AAMCS-UDC-1G-3.5G -20dB-Sf:
directivity is 23dB min

*** AAMCS-UDC-1G-3.5G -6dB-Sf:
flatness is ± 0.75 dB



A	B	C	D	E	F
75	19	10.9	6.9	61.2	5.5
G	H	J	K	L	Fix
5.05	8.2	12.5	50	2.7	M2.8

Size in mm

PASSIVE COMPONENTS

Outline is subject to change without prior notice



AA MCS
MICROWAVE COMPONENTS AND SYSTEMS

AA Sa 18, rue Nicolas Appert F-91898 ORSAY - FRANCE

Tel : +33 (0)1 76 91 50 12 – Fax : +33 (0)1 76 91 50 31 – www.aa-mcs.com

07/11